



www.RPTurners.co.uk



Gregory Moreton RPT

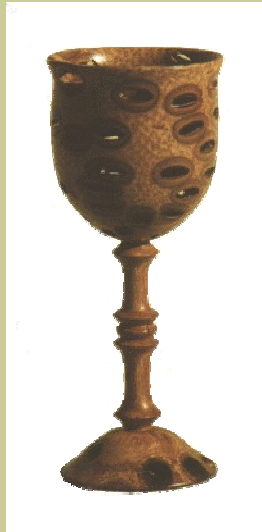
"Wood End"
47 Common Road
Claygate
Surrey
KT10 0HU

Phone: 01372 467692

Fax: 01372 467692

Email: Greg@Moreton.co.uk

Web: www.LearnToTurn.co.uk



Copyright © 2011 G. J. Moreton

Printed February 2012

Learn to
turn

in

Surrey

With

Gregory

Moreton



Gregory Moreton RPT



Gregory demonstrating

Gregory Moreton has been turning professionally for the last 18 years. He is listed on the Register of Professional Turners and a full member of the Surrey Guild of Craftsmen. He has won several prestigious awards for his work, which is sold both in the UK and internationally. Through the craft circuit, private exhibitions, galleries and the internet.

There are examples of his work in the Daniel Collection, and in the Association of Woodturners of Great Britain's travelling exhibition. Gregory has also been featured in magazines such as *The Craftsman*, *The Woodturner* and *Woodturning*.

Having taught woodturning for the last 12 years, Gregory is also able to demonstrate or lecture for groups.



Students taking their first cuts with a skew

Courses

All Courses are monitored for quality by the Register of Professional Turners.

Introduction / Refresher (2 days)

A basic course excellent as a starter for those interested in trying the craft. The introductory course will cover basic aspects of woodturning from tool sharpening to lathe skills. You will be able to make 3 or 4 items to keep during this course. All timber is included, and advice on the purchase of wood and equipment is available. Each day will run from 9.30am to 4.30pm with a short break for lunch.

This course is also available as a refresher and is run on similar lines but takes in to account the higher level of ability from the students attending, and covers slightly more ambitious projects. The emphasis then is on touching up old skills as well as learning new ones and also tackles any bad habits that may have been picked up.

Advanced (1 day to 4 days)

An ideal course for those familiar with the basics who wish to acquire particular skills. The specifics of each course are designed by the student to meet their particular needs and interests, either by selecting from pre-designed modules or individual tailoring.

A list of topics for inspiration is offered separately, but we suggest that you contact us directly for a totally unique and fully tailored course. Some projects may incur extra costs to cover materials. Advanced courses are usually one to one and thus attract a 30% supplement.

Booking

To book or for additional information please contact us using the details overleaf.

A deposit of £50 will be required to confirm a booking.

The Workshop

Gregory teaches up to 2 students at his workshop in Claygate, Surrey. Other venues can be accommodated on request. There are 2 Vicmarc VL300 lathes for student's use.

All courses are fully insured and include use of necessary safety kit, tools and timber. The workshop complies with all relevant Health & Safety and fire regulations. Safe working practice is emphasised.

Some tools and equipment are available for purchase.



Location

Claygate is conveniently located, 30 minutes mainline train service from Waterloo en route to Guildford and 10 minutes drive from either junction 9 or 10 of the M25. A list of local accommodation is available on request.

There are many local tourist attractions which include Hampton Court Palace and Chessington World of Adventures among them.

Young people under 16 years of age must be accompanied by an adult with parental responsibility.

Prices

One Day £110 Two Days £200

30% Supplement required to guarantee 1 to 1 tuition
20% discount available if 2 students book together

(Very occasionally we run courses at a weekend
for a 30% Supplement)